



Room Control for TEOS

Installation & User Manual

Document version 1.2

Overview

Thank you for purchasing these products and solutions. This document will explain how to create a Room Control for TEOS interface, synchronize it with a device, and explain the usage of this solution. Room Control for TEOS is primarily set up on a tablet interface.

Requirements

- Please check the release note related to your Manage for TEOS version to see the compatible apps with Manage for TEOS version
- TEM-TA10 license (recommended to use TEB-7DSQPM and/or TEB-7XPL(N)), the new license compatible with device is the TEM-ALxY (for one, 3 or 5 years)
- Table of apps vs TEOS platform compatibility


Apps / TEOS Manage Platform*	Version 1.4.4	Version 1.5.8	Version 2.0.17	Version 2.1.6 - 2.1.9	Version 2.2.4	Version 2.2.9
Android Player 2.58 Control 1.1	v	v	x	x	x	x
Android Player 2.83 Control 1.17	x	v	x	x	x	x
Android Player 3.16 Control 1.22	x	x	v	x	x	x
Android Player 4.30 Control 1.24	x	x	x	v	x	x
Android Player 4.97 Control 1.31	x	x	x	x	v	x
Android Player 5.211** Control 1.41** Cloud Control 1.3.3**	x	x	x	x	x	v
* Minimum versions compatible						
**Version during QA, new ones may be release and will be shown in the release note						

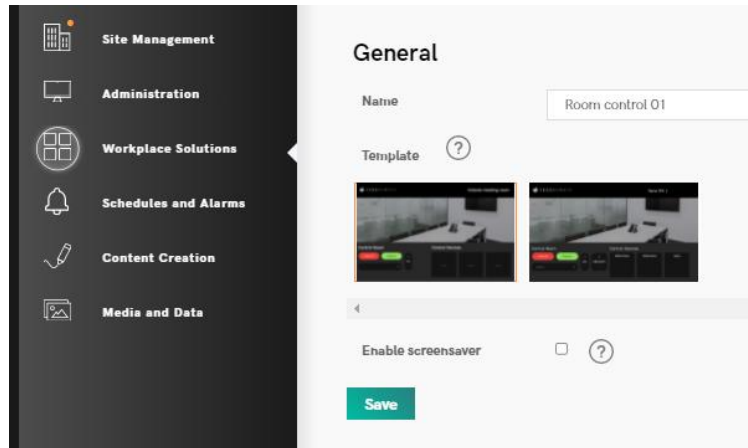
Table of Contents

1.	Creating a Room Control for TEOS interface.....	3
2.	Tablet configuration with Room Control for TEOS	3
2.1.	Add a Tablet into TEOS.....	3
3.	Link Room Control for TEOS with your tablet	6

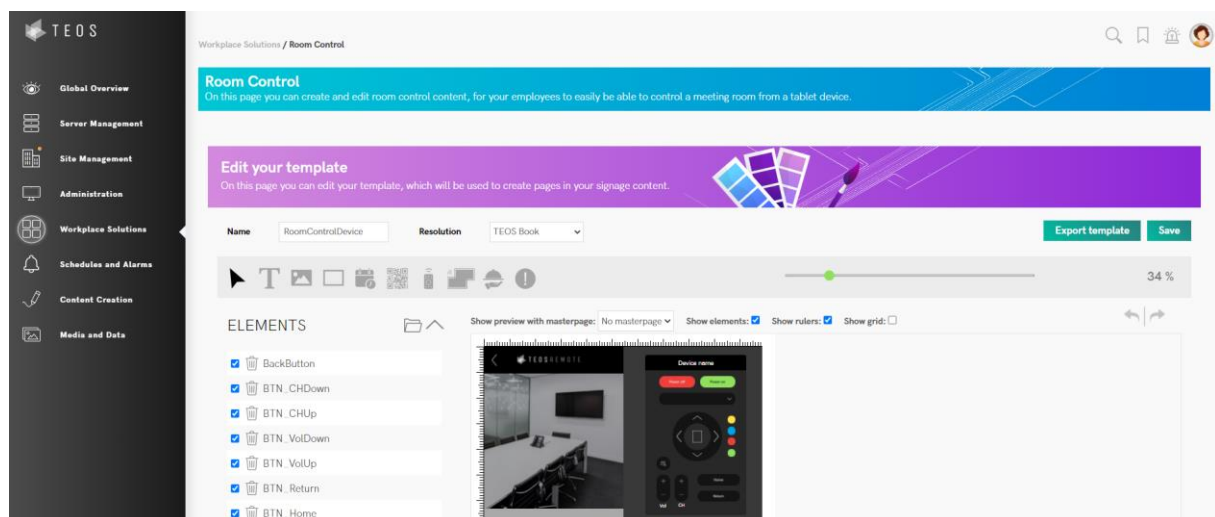
1. Creating a Room Control for TEOS interface

To show the Room Control interface on a tablet, go first Into Workplace Solutions

 **Workplace Solutions** and go to the Room Control add-on. Click on "new room control", add a name. The template can be modified afterwards.



Your Room control can be fully customized, thanks to the elements you can have from Signage. For this just click on the template name RoomControlDevice or RoomControlMain



2. Tablet configuration with Room Control for TEOS

To finalize the installation of the tablet we recommend adding it into TEOS and send content Into It.

First, make sure that network tablet Is configured.

If you need more details for the preparation of the tablet, please go to the tablet related document.

- 1) Check that network port from TEOS Server to the tablet are open
- 2) The tablet needs to be able to contact TEOS Server using the DNS approach, so please make sure that the tablet can resolve your TEOS domain name.

2.1. Add a Tablet into TEOS

14.1When using TEOS on premise

Go to Manage for TEOS Interface > Administration > Device management. You have

different methods to add devices: from an excel Import, from auto discovery option or adding It manually.

We will add in this case manually a new device, for that press on "add device"

- a) Insert the room or BRAVIA name
- b) Select "display" as device type
- c) Select Sony as device brand
- d) Model will be automatically field
- e) Insert the IP address of the device**
- f) Select the license type
- g) Add the device into a device group (create before a group in site configuration)
- h) Press **save**

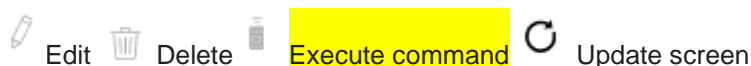
Make sure your BRAVIA is linked to the device group (meeting room type).

Note: If the device is not reachable via network, or you don't have license for it, you will get a message on top of this tab. If the device is connected and the configuration done, you must be able to see it in green in both power status and behavior status.

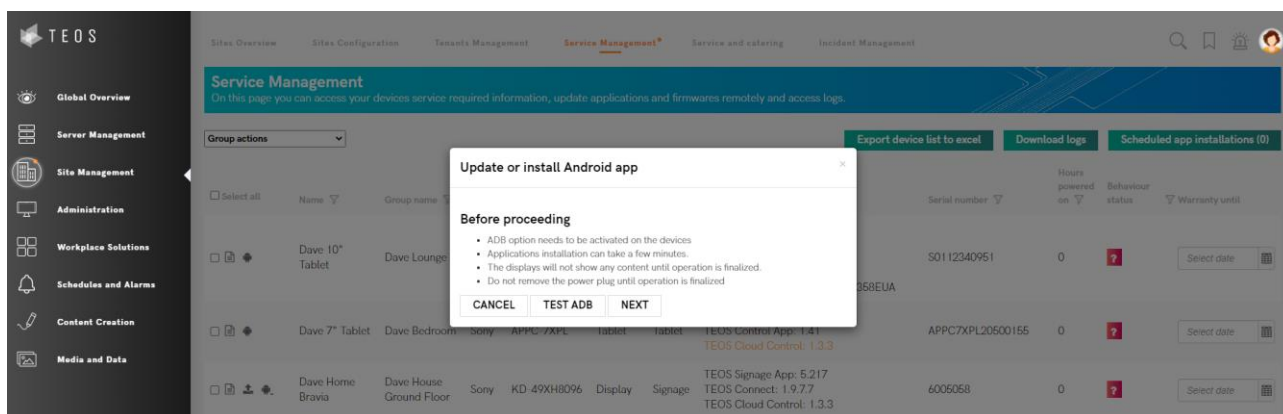
AV Devices							
On this page you can add and manage AV devices such as displays, projectors or tablets and control them remotely, check their content, status and much more.							
Add non-cloud device Auto discover Import devices from Excel							
Connecting cloud-controlled devices				Connecting Non-cloud-controlled devices			
Refresh	Name	Device model	IP Address	Status	Behaviour status	Device type	License type
	Dave 10" Tablet	Sony TEB-10SLB	Cloud: d_CF0AB1	?	Unknown	Tablet	Tablet
	Dave 7" Tablet	Sony APPC-7XPL	Cloud: d_4F3FC4	?	Unknown	Tablet	Tablet
	Dave Home Bravia	Sony KD-49XH8096	Cloud: d_F230FC	?	Unknown	Display	Meeting Room
	Gurpreet's meeting room 2 First floor	Sony APPC-10SLB	Cloud: d_A905F8	On	Room Booking	Tablet	Meeting Room
	Gurpreet's meeting room 1 Ground floor	Sony TEB-10SLB	Cloud: d_713CE7	On	Room Booking	Tablet	Meeting Room
	Gurpreet Desk booking tablet	Other TD-0350	Cloud: d_329712	?	Unknown	Tablet	Tablet
	Gurpreet's 43" Bravia	Sony FW-43BZ35F	Cloud: d_24D5A0	On	External Input	Display	Signage
	Gurpreet's player	Other AAV-X96-Max+	Cloud: d_6A5061	On	Presentation	Player	Signage

By pressing to the virtual remote, TEOS will do a first adb request to your BRAVIA. **BRAVIA will after ask to allow the connection (debugging), for a security measure** which needs to be done when the ADB connection is setup for the first time, you need to authorize the RSA key from the TEOS server, once this is accepted and saved into the local configuration file the connection can be setup at any time when the display is online.

You will have to accept the connection by Manage for TEOS to be able to see the snapshot from the screen.

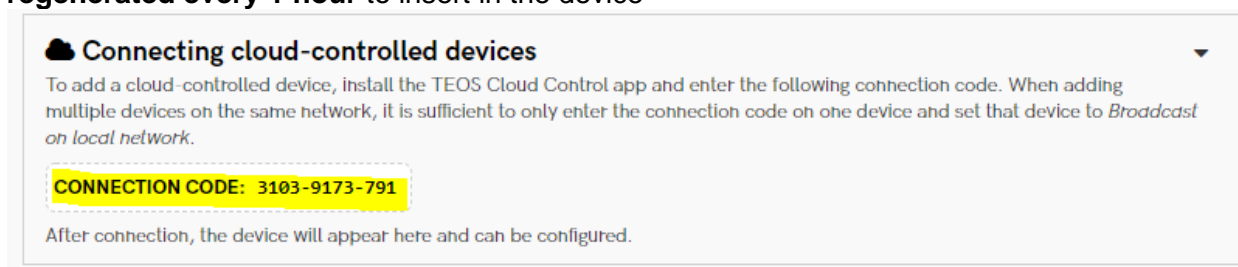


When trying to install a new App in TEOS via Site Management > Service management, and in the device press test ADB, TEOS is doing the same request to the device.

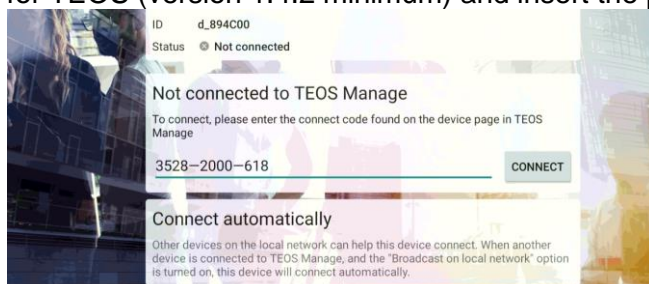


14.2 When using TEOS on Cloud (from version 3.0)

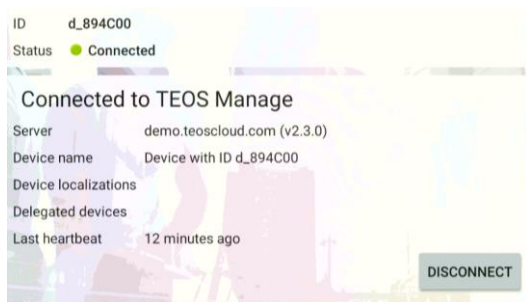
Go to your Manage for **TEOS CLOUD Interface** > Administration > Device management. We will add in this case manually a device to the cloud, for that press on the drop-down button on "Connecting cloud-controlled devices" to see the password **automatically regenerated every 1 hour** to insert in the device



Now from the device, make sure it is connected to the internet. Open the app Cloud Control for TEOS (version 1.4.2 minimum) and insert the password, press connect.



The device will then connect automatically to your cloud account without any additional action.



The ID shown in the device will appear in the AV device list after a refresh of the page and will be shown and this end of it.



You can then setup it by clicking on the edit button:

- i) Insert the room or device name
- j) Select "tablet" as device type
- k) Select Sony as device brand
- l) Model will be automatically field
- m) Select the license type
- n) Add the device into a device group (create before a group in site configuration)
- o) Press **save**

Delete/edit

Push content on



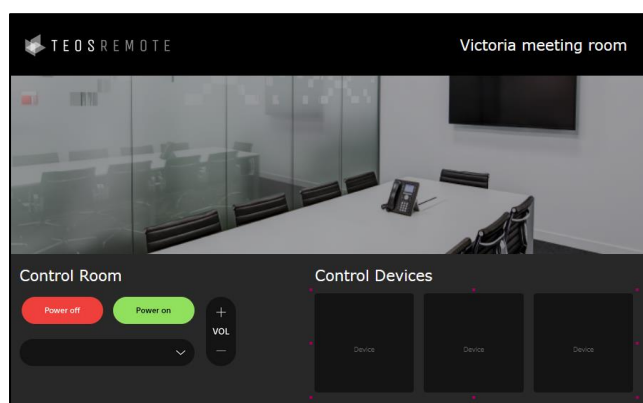
3. Link Room Control for TEOS with your tablet

Then go to Administration In the main menu and go to Site Management (or If you rather use the old way go to Sites Configuration). In Site Management lookup the meeting room that you want to add Room Control for TEOS to.

Right-click this meeting room and click "Edit". If you go to the Meeting Room tab you have to add the created "Room control presentation". Just select the Room Control presentation that you created.

When you connected your Room Control presentation to the meeting room you have to go to Administration -> Device Management. Then select the device In the Meeting Room that you want to use as a Room Control for TEOS. Most of the time this will be a tablet. Go to the Meeting Room Settings tab for this device and in "Meeting room device type" select "Room Control".

Now your tablet should show you the devices in the room that can be remotely controlled by Room Control for TEOS. With the standard Room Control for TEOS template there are 3 Devices that are shown. If you want to display more than 3 In Room Control for TEOS go back to Add-Ons -> Room Control. Click on the name of your Room Control for TEOS template. Then click on the "RoomControlMain" page at Pages. When you opened the template double-click on the 3 devices part of the template.



This will open the following popup:

Here you can select "Device Icon size". "Big" can display 1 device. "Medium" can display 3 and "Small" can display 10 devices.

SONY



For more information
visit **pro.sony/TEOS**

© 2021 Sony Corporation